

Who Dunnit Target Bug Fix Kit Installation Instructions

by Arcade Upkeep

Thank you for purchasing our target bug fix kit. It ensures the 3 bank target in Who Dunnit is down when the game is powered on. Contact us with any questions before continuing with this installation. Arcade Upkeep isn't responsible for damage to your machine by improper installation of this kit. Please read all instructions before starting installation.

Contents:

- Target bug fix board
- Board mounting pads

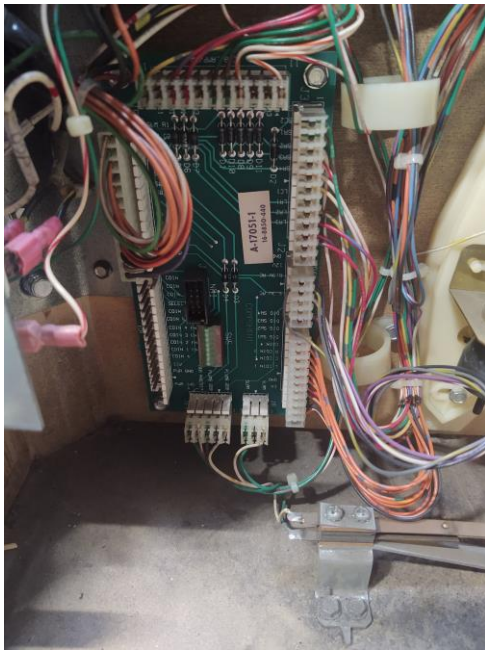
What you'll need:

- Nothing

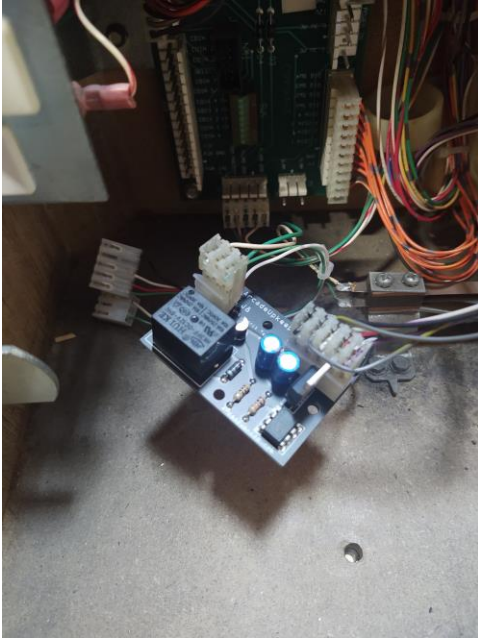
Installation Instructions:

Turn your machine off and unplug it prior to starting installation.

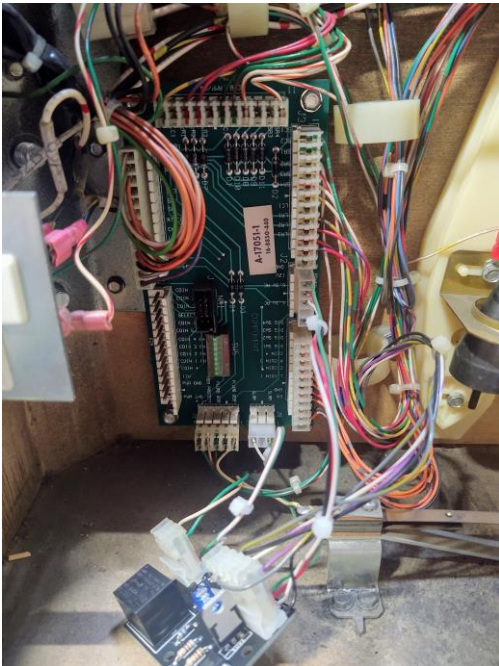
Step 1: This kit can be installed directly through the coin door although you may find it easier to lift the playfield. Locate the circuit board through the coin door, on the right side of the game toward the front. We will be using connectors J2 and J8 on this board.



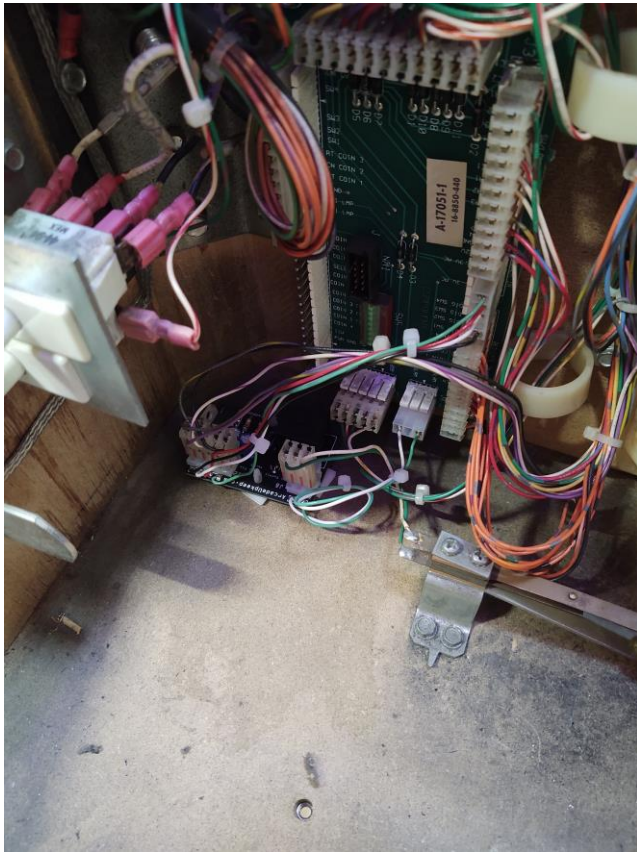
Step 2: Unplug connectors J2 and J8 and plug them onto the kit board.



Step 3: Plug the kits J2 and J8 connectors onto the games board.



Step 4: Push the mounting pins into the holes in the board. Clean the area below the games board in the corner. Peel back the adhesive and mount the kits board there.



Step 5: Plug your machine back in and power it on. Installation is complete, the target should now fix itself when the game is powered on.

If you have any questions don't hesitate to ask!

Brandon@ArcadeUpkeep.com