

# Power Supply Kit for Mods Installation Instructions

## by Arcade Upkeep

Thank you for purchasing our power supply kit for your mods. It provides 12 volts at up to 5 amps. Contact us with any questions before continuing with this installation. Arcade Upkeep isn't responsible for damage to your machine by improper installation of this kit. Please read all instructions before starting installation.

These instructions cover all options of the kit, please refer to the proper section for your kit.

Contents:

- Power Relay Board
- Input power connector for your machine, based upon kit purchased.
- Board mounting pads
- Mounting pads and zip ties

What you'll need:

- Something to cut extra zip tie ends off with.

### **Power Supply Instructions:**

*Turn your machine off and unplug it prior to starting installation.*

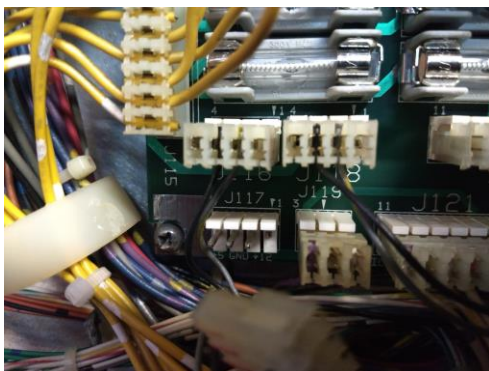
Step 1: The power brick plugs into the service outlet in the cabinet of your machine. It is usually located in the front of the cabinet on the right side. Some older machines have it on the left side and the newer Sterns have it in the head of the game. Plug the power brick into the service outlet.

Step 2: Mount the power brick in an out of the way place by peeling the adhesive strips off of the back of it and pressing it in place.

### **Power Input Connection:**

#### **WPC & WPC-95 Machines:**

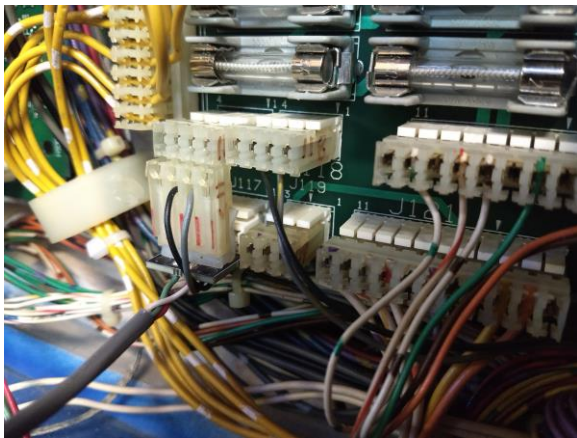
Step 1: For WPC machines, on the power driver board you should find connector J117. On WPC-95 machines this is connector J-138. Unplug this connector.



Step 2: Plug your games connector onto the connector from your kit.



Step 3: Plug the kits connector onto the games connector J117 / J138.



Step 4: Plug the two pin connector into the Relay Board.

#### **Stern Pre-Spike Machines (Also some later era Sega):**

Step 1: For Stern Pre-Spike machines we will use the extra power port near the service outlet of the machine. It is a female three pin plug. Plug your kits connector into this port.



Step 2: Plug the two pin connector into the Relay Board.

## **Stern Spike and Spike 2 Machines:**

Step 1: For Stern Spike and Spike 2 Machines we'll use the little power distribution board in the lower right of the head of the machine. You should see a three pin connector that is empty, If it's labeled it will be CN6, it should be near the center of the board. It may say "for B.B. use" in some machines. Plug the female three pin connector from your kit onto this port.



Step 2: Plug the two pin connector into the Relay Board.

## **Finishing Up:**

Step 1: Plug the power bricks barrel plug into the Relay Board.

Step 2: Push the mounting pins into the Relay Board.

Step 3: Peel back the adhesive and mount the board in and out of the way place in your machine where it won't come in contact with any other part of the game.

Step 4: Plug your mod into the power output port of the kit.

Step 5: Plug your machine back in and power it on. Your mod should be operating normally.

If you have any questions don't hesitate to ask!

Brandon@ArcadeUpkeep.com