

# Dual Voltage Power Supply Kit Installation Instructions

## by Arcade Upkeep

Thank you for purchasing our dual voltage power supply kit for your mods. It provides both 5 and 12 volts to power your kits along with a shared ground. Contact us with any questions before continuing with this installation. Arcade Upkeep isn't responsible for damage to your machine by improper installation of this kit. Please read all instructions before starting installation.

These instructions cover all options of the kit, please refer to the proper section for your kit.

### Contents:

- Power Relay Board with connectors as ordered
- Stern Pre-Spike Aux Input connector or
- Stern Spike CN6 Input connector or
- WPC/WPC95 input connector
- Mean Well Power Supply
- Board mounting pads
- Mounting pads and zip ties
- Optional USB adapter, if ordered

### What you'll need:

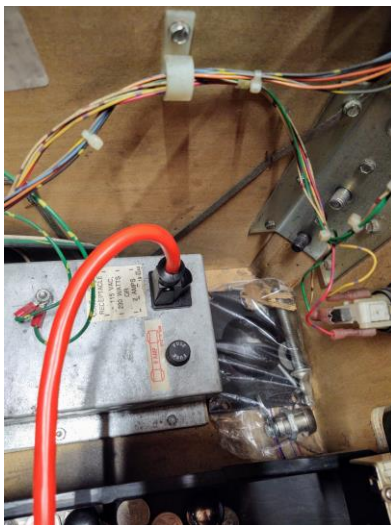
- Something to cut extra zip tie ends off with.

NOTE: The input connector included in your kit and on the circuit board are based on the type you ordered. These instructions include all types, please skip to the connector type you ordered where appropriate.

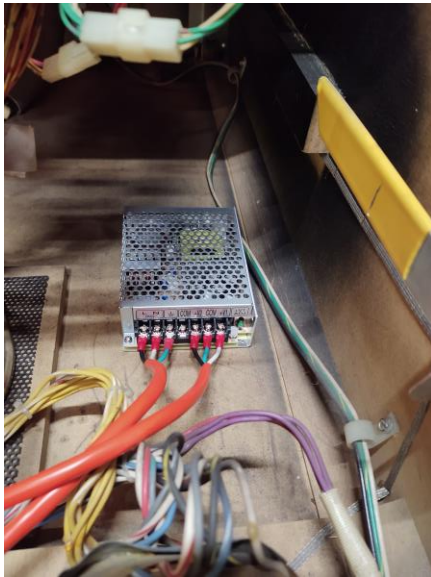
## **Power Supply Instructions:**

***Turn your machine off and unplug it prior to starting installation.***

Step 1: The Mean Well power supply plugs into the service outlet in the cabinet of your machine. It is usually located in the front of the cabinet on the right side. Some older machines have it on the left side and the newer Sterns have it in the head of the game. Plug the power supply into the service outlet.



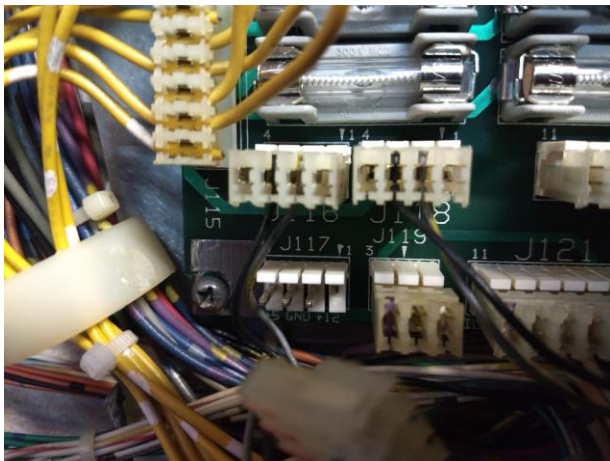
Step 2: Mount the power supply in an out of the way place by peeling the adhesive strips off of the back of it and pressing it in place.



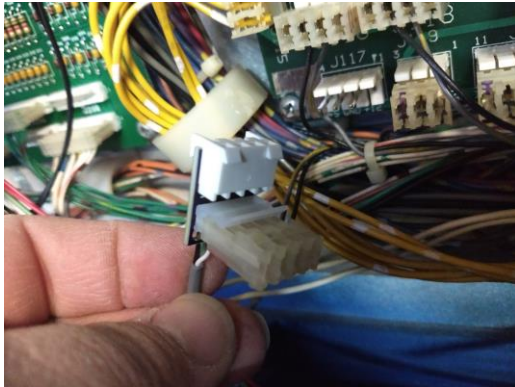
### **Signal Input Connection:**

#### **WPC & WPC-95 Machines:**

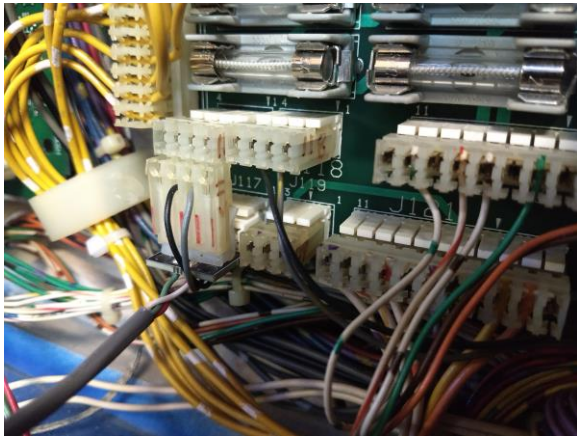
Step 1: On the lower left of the power driver board, you should find connector J117 (connector J138 on WPC-95.) Unplug this connector.



Step 2: Plug your games connector onto the connector from your kit.



Step 3: Plug the kits connector onto the game's connector J117 / J138.



Step 4: Plug the two-pin connector into the Dual Relay Board.

### **Stern Pre-Spike Machines (also some later era Sega Machines):**

Step 1: For Stern Pre-Spike machines we will use the extra power port near the service outlet of the machine. It is a female three pin plug. Plug your kits connector into this port.



Step 2: Plug the two-pin connector into the Dual Relay Board.

### **Stern Spike and Spike 2 Machines:**

Step 1: For Stern Spike and Spike 2 Machines we'll use the little power distribution board in the lower right of the head of the machine. You should see a three-pin connector that is empty, If it's labeled it will be CN6, it should be near the center of the board. It may say "for B.B. use" in some machines. Plug the female three pin connector from your kit onto this port.

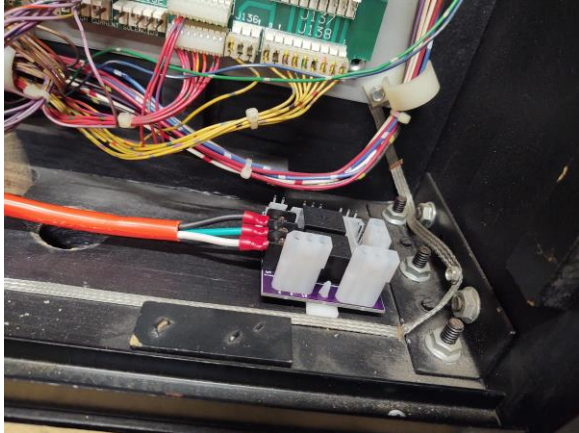


Step 2: Plug the two-pin connector into the Dual Relay Board.

## **Mounting the Board:**

Step 1: Push the mounting pins into the Relay Board.

Step 2: Peel back the adhesive and mount the board in and out of the way place in your machine where it won't come in contact with any other part of the game.



Step 3: Use the extra mounting pads and zip ties to dress the wiring in the machine, keeping it from being pinched or otherwise in the way.

Step 4: Plug your mods into the power output ports of the kit.

Step 5: Plug your machine back in and power it on. Your mods should be operating normally.

### **Optional USB Connector:**



This optional adapter provides 2 USB connectors running at 5 volts. The plug should match the same type provided on the dual voltage board you ordered. Simply plug it in to any of the provided connectors and plug your kit into one of the USB connectors. NOTE: Charging your phone from one of these USB connectors is not recommended, they provide low amperage to power LED mods only.

If you have any questions don't hesitate to ask!

Brandon@ArcadeUpkeep.com